

GLOBALSHREE ENGINEERING PROJECTS PRIVATE LIMITED



**Avail Professional & Complete Solutions
For Industrial Washing Machine, Industrial Component
Cleaning Washing Machine, Special Purpose Machine,
Duplex Milling Machine Fixture, etc. of Latest
Technological Standards.**



**Mr Mandar
(Business Head)**



+91 9922997029



www.gseppl.com

About Us

We at **Globalshree Engineering Projects Private Limited** came through humbly in the year **2015** and, attained an exceptional growth rate in the marketplace through our unmatched professionalism, vision & commitment towards work. As a **manufacturer** and **service provider**, we are providing cutting-edge solutions to industries for an extensive range of industrial washing, milling & more machines. Our sheer purpose is to uplift the quality & efficiency of industries by providing them high performing, technically advanced & cost-effective machines such as **Industrial Washing Machine, Industrial Component Cleaning Washing Machine, Special Purpose Machine, Duplex Milling Machine Fixture** and more. Our firm also provides support for finest CNC Machine Job Works.

Our inspiring mentor, Mr. Mandar upholds great expertise in the industry based on which he is showing us the path of constant progression and succession. His mentorship is effectively pushing the work of our teams of production, marketing & management to new levels, making us a better partner to our prestigious customers.

Quality Management

In adherence to the top industrial standards, we have established an effective quality management system at our unit. It allows us to maintain appropriate quality control starting from the designing specification & material procurement to the final completion of all orders. Our experts rigorously test all the machines before providing them quality assured label.

Market Presence

Our rising presence & visibility in the marketplace is the result of our smart marketing approaches and customer centric work approaches. We are keeping ourselves well tuned with the rising demands & expectations of customers in order to be a resourceful partner to them. This way, we are extending our reach to many new customers in the domain while maintaining strong relations with our existing clients. By consistently meeting their growing requirements for **Industrial Component Cleaning Washing Machine, Industrial Washing Machine, Duplex Milling Machine Fixture, Special Purpose Machine** and other items, we are strengthening our market presence with time.

Our Products



General Purpose Industrial Parts Washing Machine



Industrial Component Cleaning Washing Machine



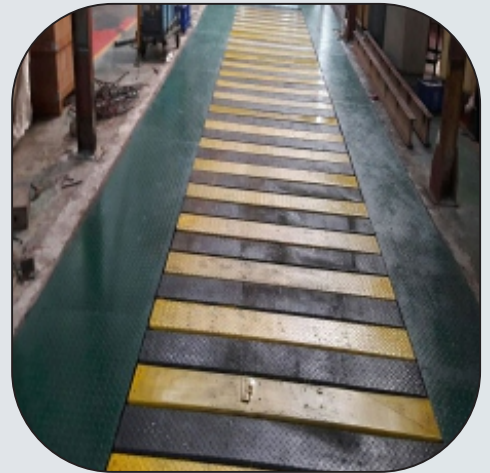
Slat Conveyor Line Shifting Work



Pre Paint Conveyor Relocation



Duplex Milling Machine



Post Paint Conveyor Relocation



Prepaint Conveyor Relocation



Post Paint Conveyor Relocation



Duplex Milling Machine Fixture



Spindle Machine



**Makino HMC Relocation
Shifting**



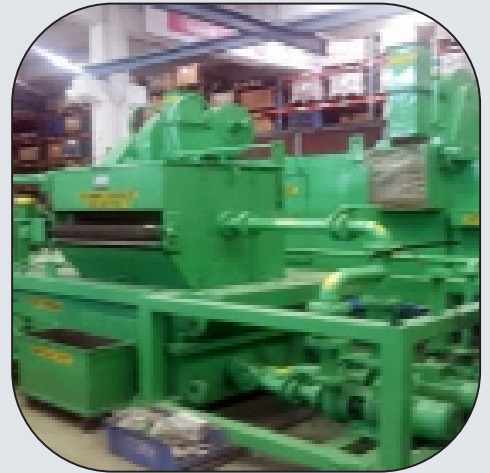
**Plant Machinery Relocation
Shifting**



IMM 2750 Shifting



Gear Chamfering Machine



Retooling of Washing Machine



IMM Machine

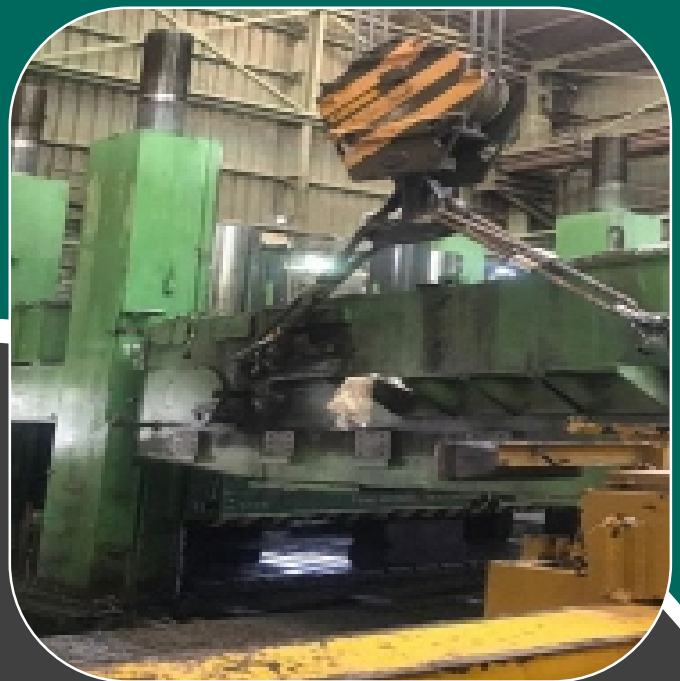


Retooling Machine



Washing Machine Chain Work

GLOBALSHREE ENGINEERING PROJECTS PRIVATE LIMITED



Contact Us



Laxmi Plaza, 3rd Floor, Office No 301-304,
317, 318, Old Mumbai Pune Highway, Kasarwadi,
Pune - 411034, Maharashtra, India



mkt@globalshreeengineeringppl.com



Mr Mandar
(Business Head)



+91 9922997029



www.gseppl.com